

Dipper Light DP1 / DP2

Viewport Studio / 2014

decode.london



1x

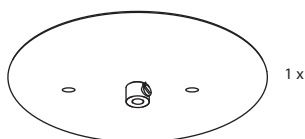
US

1

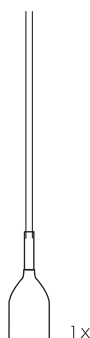
Contents

VS1 / VS2

 1x



1x



1x

 2x

Before you start

- Please read the instructions carefully before you commence the installation.
- Retain this instruction booklet for future reference. If the product is sold, please ensure the booklet is left with the appliance for the benefit and safety of the new owner.

Warning



- Electricity can be dangerous.
- Before commencing installation ensure the power supply is disconnected at the fuse box.
- The lighting is for use in a normal dry domestic indoor environment.
- Do not attempt to fit installation unless you are competent.
- If in any doubt consult a qualified electrician to complete electrical installation.

Installation

- Take care when handling and installing to avoid damage to the product.
- Avoid mounting the fitting on a damp surface such as newly painted or plastered area. This may cause discoloration to the finish.
- The finish is only guaranteed against normal non aggressive atmospheric conditions. To prevent rusting, the light should not be fitted in locations near the sea, polluted atmospheres or near heating.
- Unless otherwise marked/illustrated the lighting is for use in a domestic indoor environment.

Required Tools



Lamp replacement

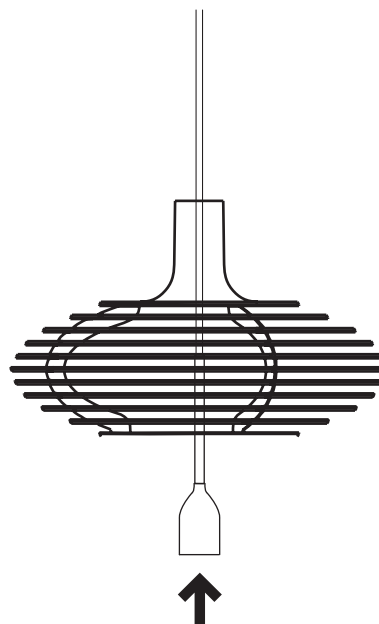
60W Max. E26 ES. Dispose of old bulbs with care and in accordance with local regulations.

Important

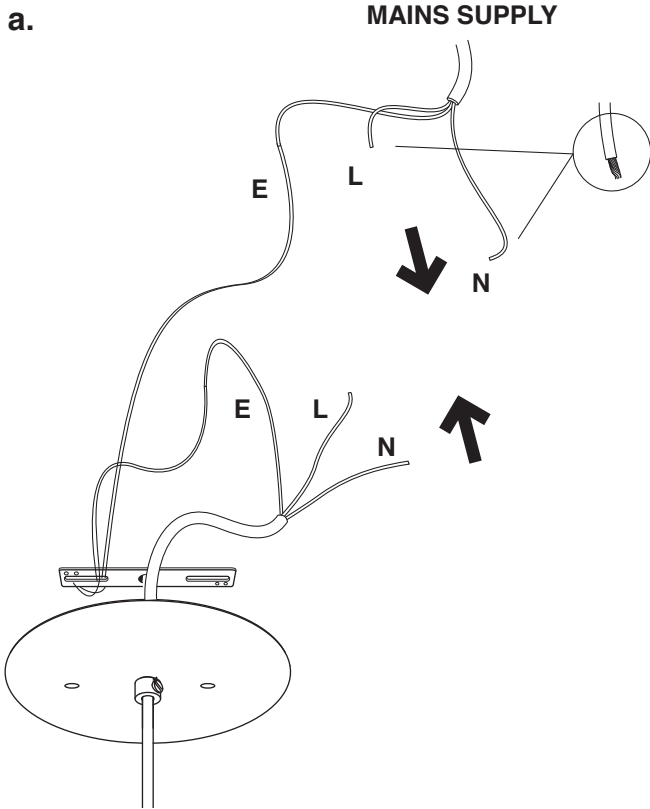
For your safety: If the electrical cable of the light is damaged, it should be completely replaced by the manufacturer or his service agent or other qualified person.

Pendant Assembly

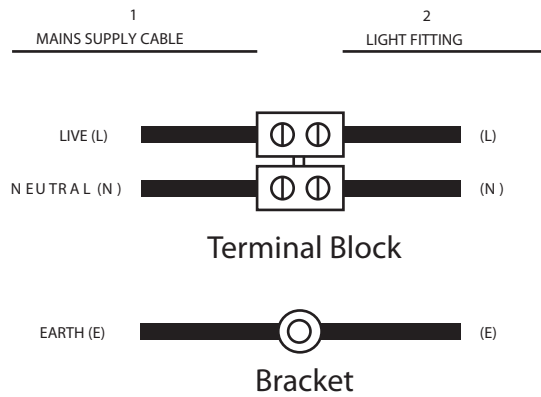
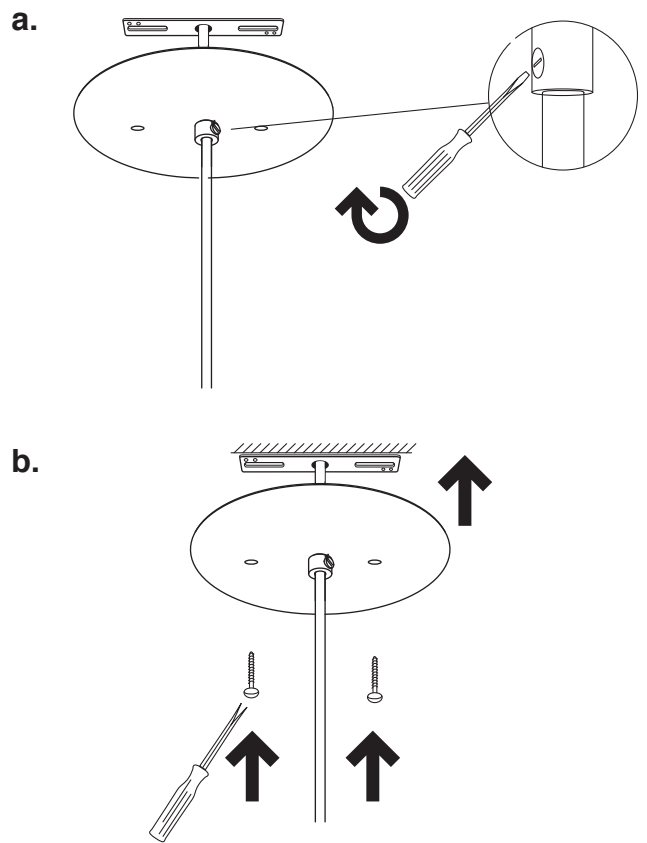
1.



3



4



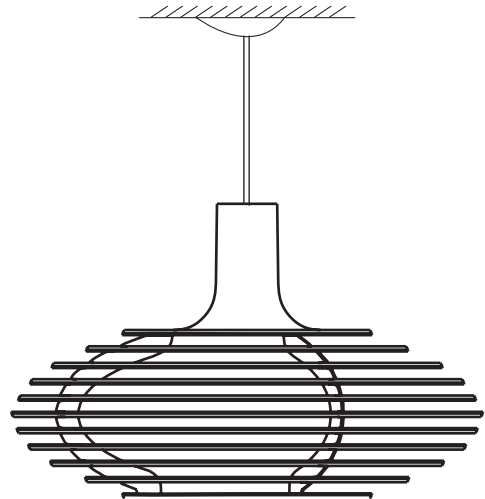
Check that:

- You have identified the mains cable correctly.
- The connections are tight.
- You have clamped the conductor not the cables' insulation.
- No loose strands have been left out from the connector block.

Mains supply cable (1): Live (L) = Brown or Red / Neutral (N) = Blue or Black / Earth (E) = Green / Yellow or Green. **Light fitting (2):** (L) = Clear / (N) = Clear / (E) = Green / Yellow or Green.

Screw fix the metal bracket into the ceiling ensuring the power source is still accessible.

Position the junction box in the ceiling void.



Decode London Limited
B02 Leyton Industrial Village
London, E10 7QP
United Kingdom

info@decode.london
www.decode.london