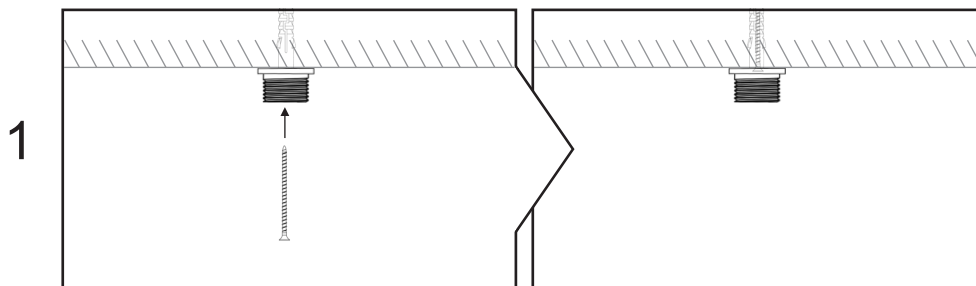
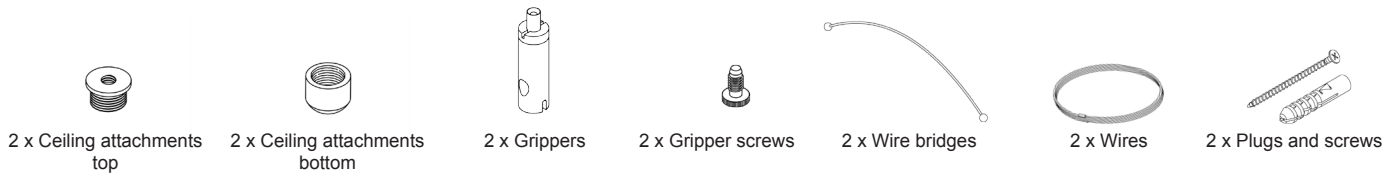
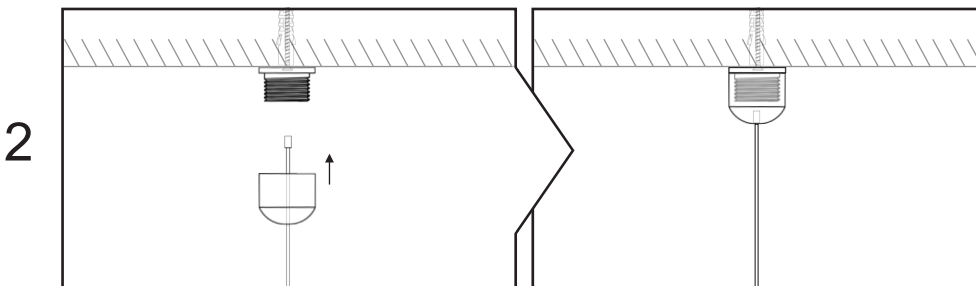


INSTALLATION OF THE WIRES FOR RISTIKKO LAMP

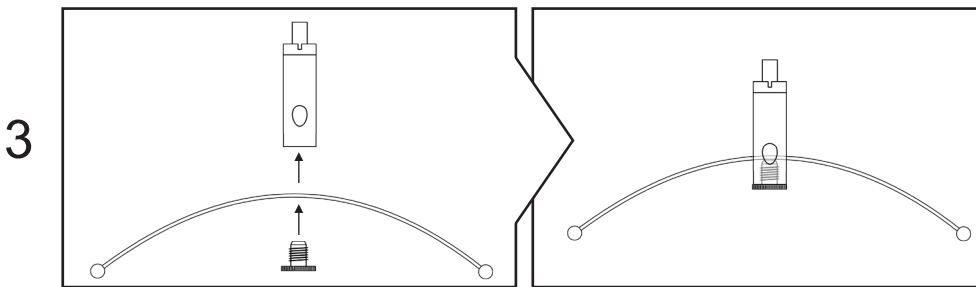
Installation products included in this package



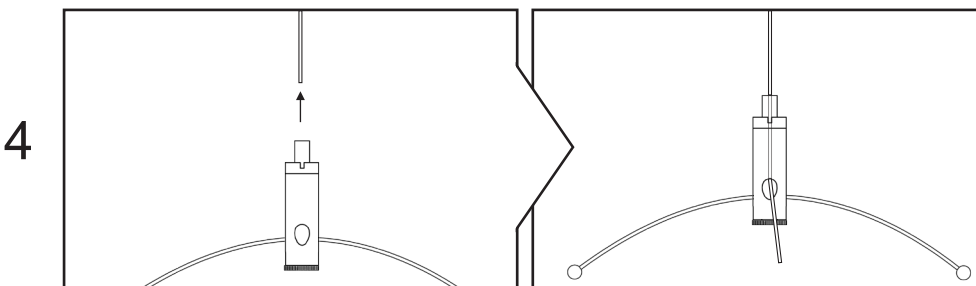
Use the plugs and screws to fasten the top ceiling attachments at the desired location.



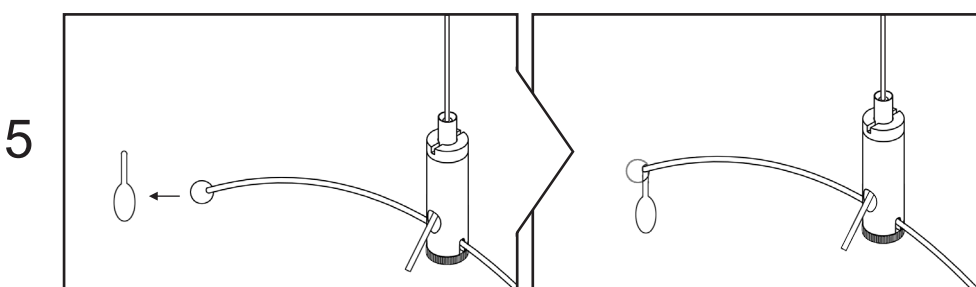
Protrude the wires through the bottom ceiling attachments and screw it on the top attachments.



Put the wire bridges inside the slit on the bottom of the grippers and fasten the gripper screws.



Protrude the wires hanging from the ceiling into the gripper and make sure at least 2cm of the wire is sticking out for safety measures.



Insert the bridge wire endings into the keyholes of the lamp. Adjust the height and position of the lamp with the wire and grippers.