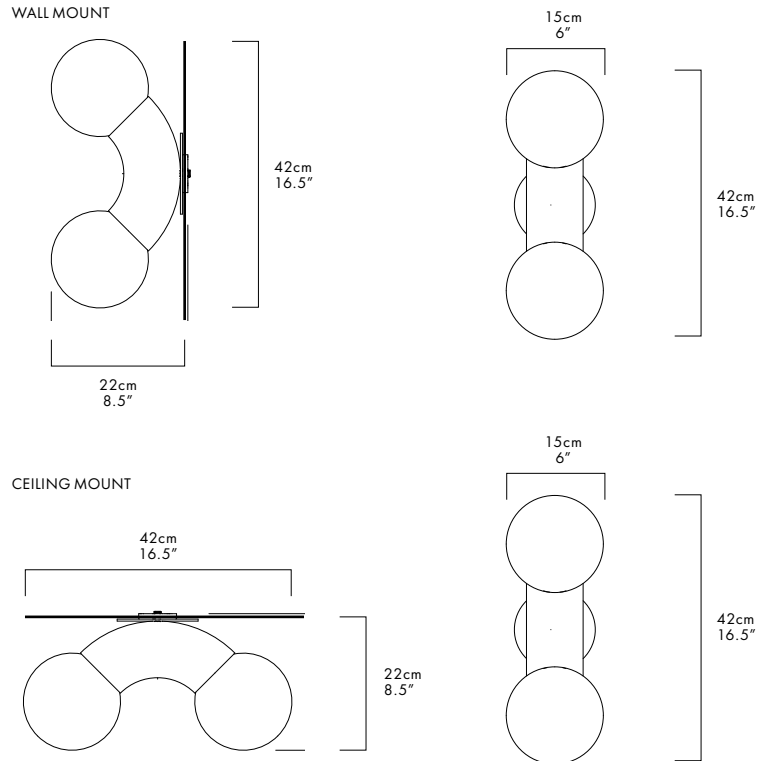


VINE – CEILING/WALL

CAINE HEINTZMAN / 2018



VIN-CW-CH-120



DESCRIPTION

The Vine Pendant combines exaggerated form with the propensity for repetition resulting in an ambitious vertically scaling fixture.

MATERIALS

- Chromed Steel
- Opal Glass Globe

MANUFACTURED

Canada

DIMENSIONS

42 x 22 x 15cm / 16.5" x 8.5" x 6"

ELECTRICAL

- 100-240V
- Dimming: ELV

INCLUDED LAMP

- 3000K
- 2 x 4W G9 LED Lamp

CANOPY KIT

For North America ships with canopy and trimless rough-in.

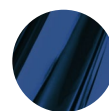
CERTIFICATIONS



FINISHES



CHROME (CH)



MIDNIGHT CHROME (MD)



CUSTOM

SERIES

VIN

TYPE

CW

FINISH

- CH (CHROME)
 MD (MIDNIGHT CHROME)

VOLTAGE IN

- 120
 230