

approx 2kg (4.5lb)

- PENDANTS: one
- MOUNTING: mini canopy 30mm (1.2") in diameter x 11mm (0.4") deep
- LAMPING: 1.5w LED (2500K or 3500K) / 10w xenon (2600K)
- COAX: adjustable. 3000mm (10') standard / up to 30500mm (100') maximum
- MATERIALS: blown glass, copper mesh, braided metal coaxial cable, electrical components, white canopy
- WEIGHT: approximately 2kg (4.5lb)
- TRANSFORMERS: remote mounted (fixture does not hook directly to a junction box). Transformers included

## DESCRIPTION

The 'm' designation in this 84 variant refers to the mini canopy size. The mini canopy is just over 30mm (1.2") in diameter and 11mm (0.4") deep, which creates a subtle profile that will essentially disappear into the application surface. The pendant drop lengths on this light fixture are adjustable up to the specified maximum.

A white glass bubble is captured inside a fine copper mesh basket and then plunged into hot clear glass. Air is blown into the matrix to gently push the white glass through the mesh, creating a delicate pillowed form that is suspended inside the thick outer layer of clear glass. Sometimes the copper mesh basket folds and crinkles, adding specificity to each piece.

## NOTES

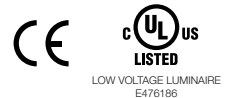
- + Purchase replacement lamps online at [www.bocci.ca/lamps](http://www.bocci.ca/lamps)
- + Unless otherwise noted when ordering, all fixtures will be outfitted to be xenon compatible
- + Unless otherwise specified, a single class 2 transformer will be sent for every 5 xenon fixtures or every 12 LED fixtures
- + Please specify the colour temperature when ordering LED fixtures
- + Requires transformers to be remote mounted

US Patent Pending  
EU Patent # 003611144-0001 to 0004

Made in Vancouver, Canada

Vancouver  
[sales@bocci.ca](mailto:sales@bocci.ca)  
[www.bocci.ca](http://www.bocci.ca)

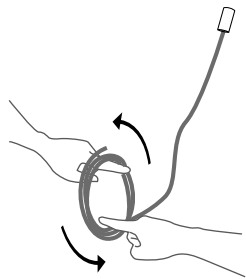
Berlin  
[europe@bocci.ca](mailto:europe@bocci.ca)  
[www.bocci.ca](http://www.bocci.ca)



MINI CANOPY

# 84.1m

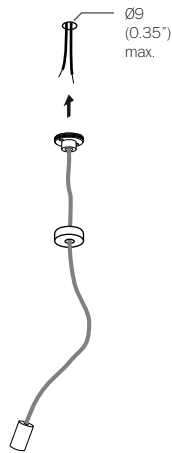
Design by Omer Arbel  
PRODUCT SPECIFICATION



1

Very carefully uncoil the braided coaxial cable in a spool like manner. Insert your index fingers into opposite sides of the roll then rotate your fingers around each other to unroll the coaxial cable.

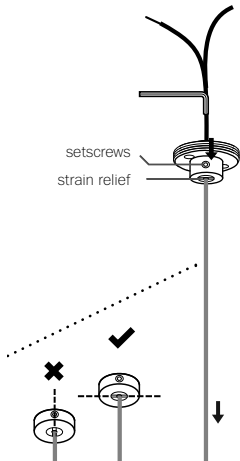
Use patience: allow the cable to uncoil completely to avoid kinks.



2

Drill a maximum 9mm (0.35") diameter hole in ceiling material. Pull low voltage house wire through the hole.

Note: There MUST be adequate backing, not just the drywall. This low voltage wire will run to a remote mounted transformer.



3

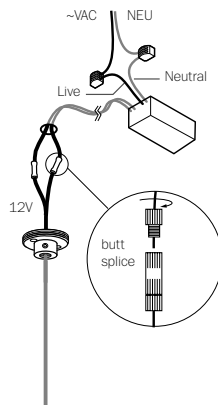
Thread the coaxial cable through the canopy, use a 2mm Allen key to loosen the setscrew in the canopy and gently feed the cable through until you have reached your desired drop length.

Use Allen key to tighten the setscrew to hold the strain relief and secure the coaxial cable at its new length. Perform a gentle tug test to ensure it is secure.

DO NOT OVERTIGHTEN.

Note: The strain relief is a black plastic collar around the coaxial cable. There is a single slot opening on the side of the strain relief component. It is essential that this opening is oriented at 90 degrees to set screw chamber. There can be no contact between the set screw and the cable.

RISK OF ELECTRIC SHORT!



4

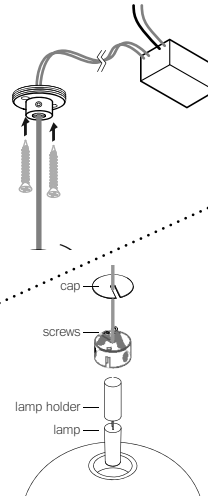
Primary: connect live and neutral power supply leads to supply wiring. Line with Live wire and Neutral with Neutral.

Secondary: Connect (+/-) wires to the coaxial cable using #16 butt splices, provided (stagger the splices).

For multiple pendant installations, ensure that the braided outer wires are all connected to one 12V output wire and all inner insulated wires are connected to the other or a short will occur.

Wires are 1.02mm (18AWG).

Note: Insulated core is positive and braided exterior is negative.

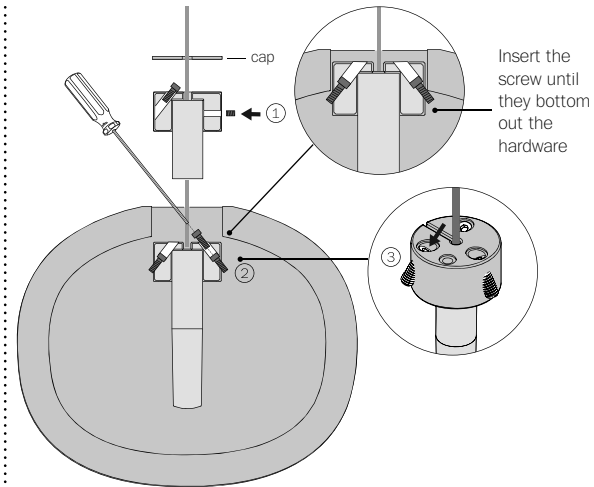


5

The client is responsible to ensure fasteners are attached to a robust structural substrate.

Affix mini-canopy to ceiling surface with fasteners provided. Twist the threaded cover into place.

Turn power to fixture on.



6

Step 1: Attach the lamp holder to the pendant hardware with set screw provided.

Plug the lamp into lamp socket. Do not touch the lamp with your bare hands. Ensure power to lamp is working correctly.

Step 2: Insert the pendant hardware assembly into the pendant.

Step 3: Tighten the 3 screws until they are fully engaged (refer to illustration above)

Give it a gentle pull to ensure the screws are locked onto the pendant.

Slide cover cap onto the coaxial cable and place into the inset portion of the pendant hardware.

Note: when using a dimmer use only low voltage electronic dimmer

7

Clean fingerprints from surfaces.

For additional assistance, please contact Bocci:

Vancouver  
sales@bocci.ca  
www.bocci.ca

Berlin  
europe@bocci.ca  
www.bocci.ca

US Patent Pending  
EU Patent # 003611144-0001  
to 0004

Made in Vancouver, Canada



MINI CANOPY

84.1m

Design by Omer Arbel  
PRODUCT INSTALLATION INSTRUCTIONS