

Mizu, flowing *light*.

design Nicolas Terzani
terzani.com



Product Name

Mizu
3 light pendant

Materials

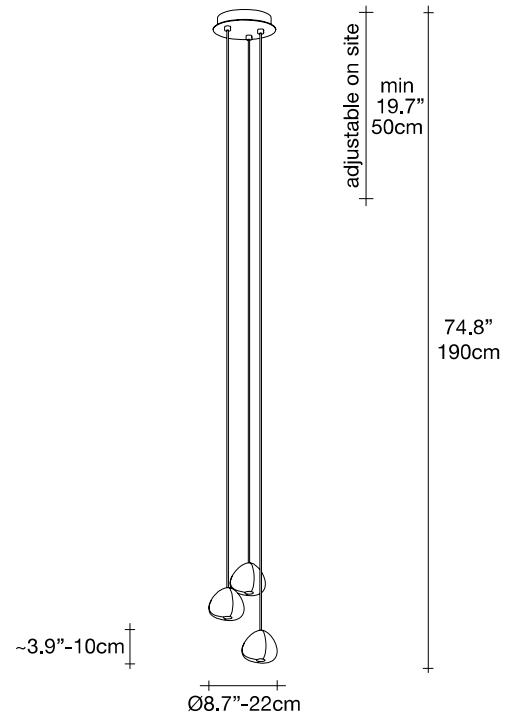
clear crystal



Finishes | Code

-  clear
0R03S H4 A9
-  clear/silver dust
0R03S H4 F4
-  clear/gold
0R03S E8 A4
-  clear/champagne
0R03S E8 H1
-  clear/cognac
0R03S E8 H4

Body



Recommended Light

120V ~ 50/60Hz

 XENON
3 x 10W G4 12V

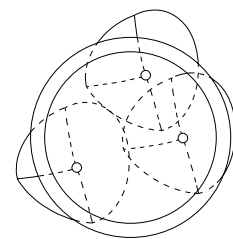
or

 LED
3 x 2W G4 12V

dimmable with

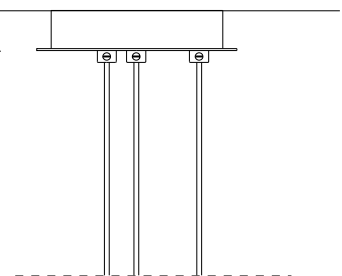
 IGBT
TRIAC

Canopy | white or brushed nickel








Ø8.3"-21cm

1.6"-4cm



Inspired by the tranquil and mesmerizing light refractions created by water, Mizu is a customizable pendant light from Terzani. Like water droplets, no two Mizu are alike, each crystal shape is unique and made meticulously by hand. Using only the clearest crystal, Mizu perfectly emulates water's refraction of light, casting amazing patterns around the room, reminiscent of flowing water. Also available in gold leaf. Design Nicolas Terzani

v1.1

 lbs 17.6  lbs 22  12.2" x 12.2" x 10.2"
 kg 8  kg 10 31 x 31 x 26 cm