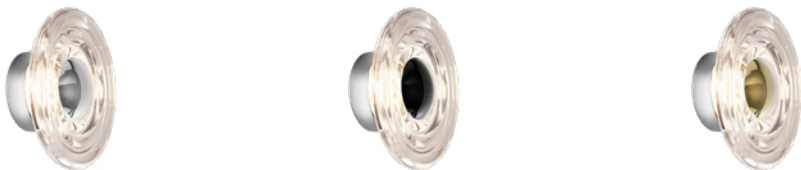


# PRESS SURFACE MINI LED



OFF



ON

Press is a series of lights made from the thickest and most transparent glass with a satisfyingly rounded linear surface detail. The ribbed glass creates diffusion of the light source and projects linear and stripy patterns. Press Mini is a new surface light which is more compact in size, lighter in weight and designed to be clustered in multiples and paired with the larger surface light. The metal dome cap can be interchanged depending on the customer's colour preference - silver, gold and black caps are sold with the surface lights.

## CLEAR

Code	PRS11CLUL
Shade Material	Glass
Shade Colour/Finish	Clear, Gloss
Fitting Material	Glass
Fitting Colour/Finish	Silver, Glass
Service Offer	New

Year of Design	2022
Product Weight	6.2 lb
Finishing Process	Pressed
Surface Mount Shape/Diameter	Cylinder, 4.7 in
Power Method	Mains
Light Source	6W LED
Max Wattage	7.5W
Lumens	500
CRI	>90
Colour Temperature	2700K (Standard) 3000K accessory available
Dimmability	Mains Dimmable, Leading & Trailing Edge
Voltage	100-120V
Environment	Indoor, Outdoor, IP55
Spares	LEDRING11T, LEDDRIVER01UL
Certification/Electrical Class	T24

