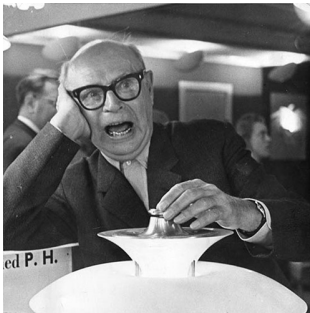


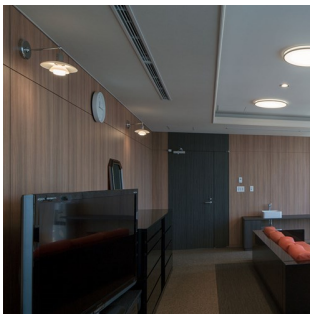
PH 2/1 WALL LAMP

The fixture is designed based on the principle of a reflective three-shade system, which directs the majority of the light downwards. The shades are made of mouth-blown opal three-layer glass, which is shiny on the top and sandblasted matt on the inside, giving a soft and diffused light distribution.



Poul Henningsen

The very influential Danish designer, architect, writer, and cultural critic, Poul Henningsen (1894-1967), has had a huge impact on Danish thinking and design. His legacy is an integrated part of Louis Poulsen's endeavor to shape light.



**Yokohama
College of
Dental Care and
Health Sciences**



Private residence, Sipoo

Product info

Mounting

Mounting with cord and plug or for hardwiring. With cord: Cord with plug. Cord length: 2.9m. Light control: On/off switch on wall box. Without cord for hardwiring: Wall bracket for mounting on wall. Light control: Two options. Either with on/off switch on wall box or without switch on wall box with turn on/off at main switch

Finish

High lustre chrome plated. White opal glass.

Materials

Shades: Mouth-blown white opal glass. Wall box: High lustre chrome plated, spun brass. Suspension: High lustre chrome plated, spun aluminium. Arm: High lustre chrome plated, brass.

Sizes and weights

width x Height x Length (mm) | 200 x 165 x 296 Max 2.0 kg

Class

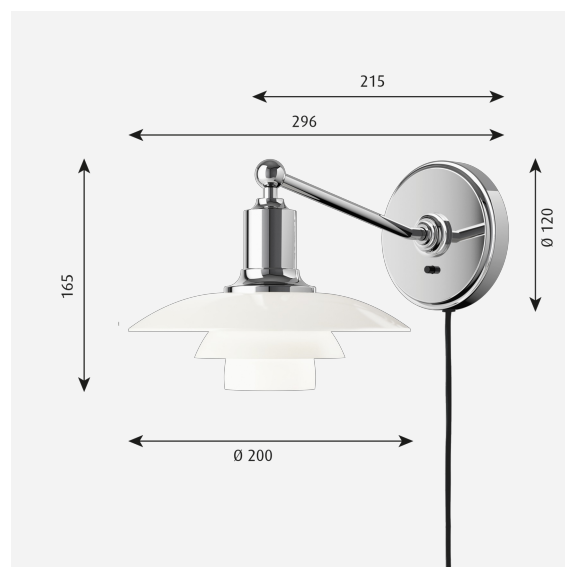
Ingress protection IP20. With cord and plug: Electric shock protection II. For hardwiring: Electric shock protection I.

Specification notes

The innovation of light sources is ongoing. Consequently we only inform about the max. wattages. On www.louispoulsen.com we update a list of recommendable light sources.

Light source

1x20W E14



Related products



PH 5



PH 2/1 Stem Fitting



PH 2/1 Table Lamp



PH 2/1 Pendant



PH 2/1 Pale Rose Brass Table Lamp



PH 2/1 Aged Brass Table Lamp

Product variants

Cable type	Light source	Class	Switch
With cord	1x20W E14	I	With switch
Without cord		II	Without switch

Design

Poul Henningsen

Weight

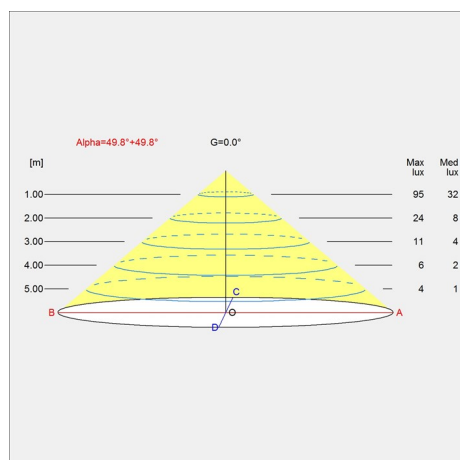
Min: 1.888 kg Max: 2.004 kg

Finish

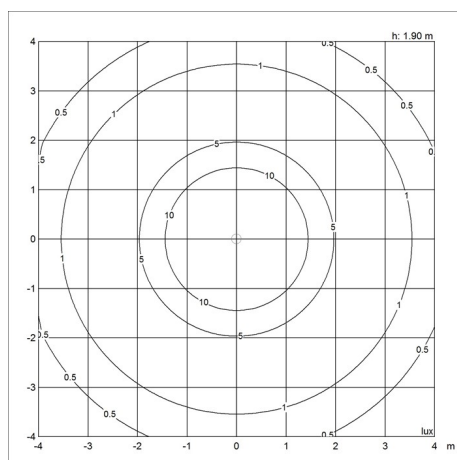
White opal glass

Light distribution diagrams

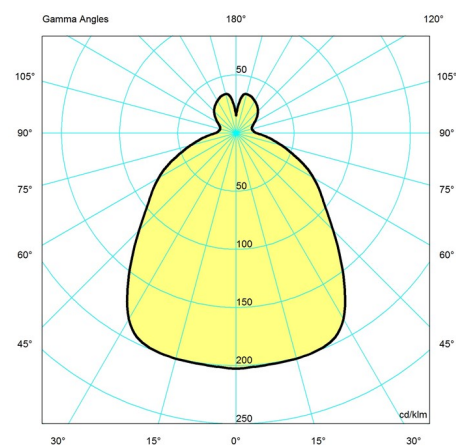
Cartesian



Isolux



Polar



Spare parts & accessories

Product

PH 2/1 middle shade Opal glass
 PH 2/1 lower shade Opal glass
 PH 2/1 top shade Opal glass
 PH 2/1 Table Lamp springholder w/springs

Variant number

5741084940
 5741084953
 5741084937
 5741086333

