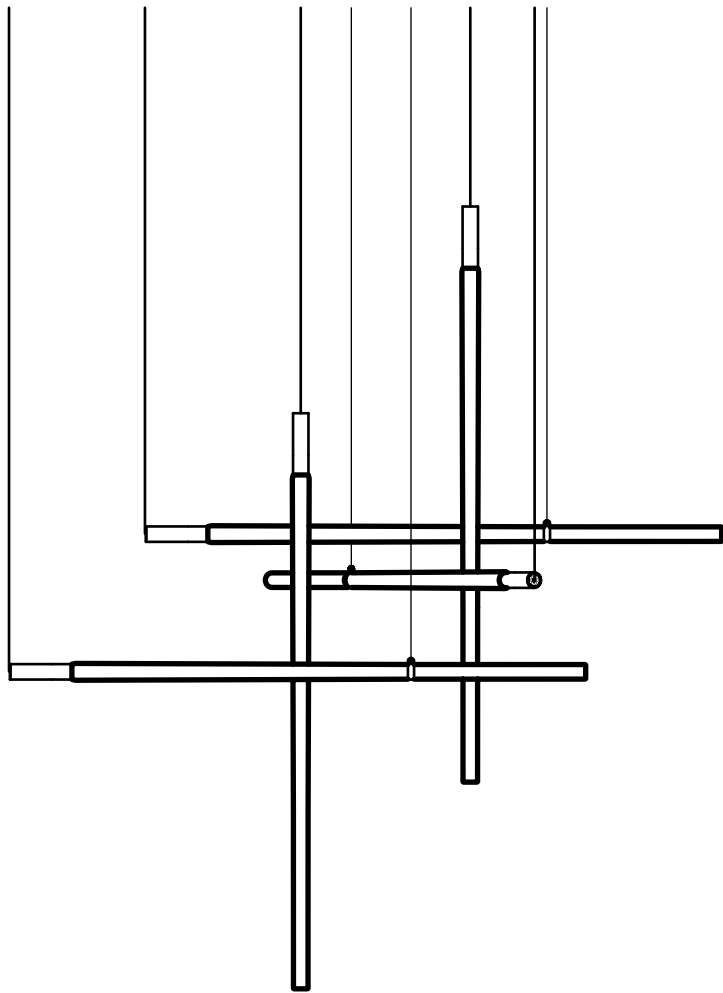


flare

Design by Kateřina Handlová



loomma

Installation Manual
for Pendant Light Fixtures
Don't throw away!

Introduction

- Please read this user's manual carefully prior to installation and follow its instructions and recommendations.
- The installation of the pendant light requires more than one person.
- For safety reasons, as well as for warranty purposes, it is forbidden to use this product in breach of this manual and other purposes stipulated in this manual.
- Prior to assembly, use an appropriate circuit breaker to turn off electricity.
- All interventions regarding the wiring of the light fixture may only be carried out by a qualified electrician.
- Prevent children or persons with lowered sensory or psychological abilities from handling the light fixture, as it contains small and fragile pieces that could be dangerous when inappropriately handled or ingested.
- The producer bears no liability for damage caused by improper installation.
- The dimensions and weight of glass parts may differ slightly due to manual production.
- The surface of the mounting may also include minor imperfections due to manual production.
- The pendant light is intended for interior lighting.

Components included in the package

- Glass part of the light fixture
- Mounting
- Allen key
- Dimmable light source
- Installation manual
- Maintenance instructions
- Installation manual for the transformer
- Gloves

Technical parameters, specifications

- Nominal voltage: 220-240V / A.C. 50–60 Hz
- Protection: IP 20
- Input power: LED MCOB, 4 W (+-5%)
- Cable length: 2,5 m
- Weight: \pm 2,5 kg
- Size of rod A: dia. 30 mm, H1120 mm
- Size of rod B: dia. 30 mm, H1067 mm
- Size of rod C: dia. 30 mm, H990 mm
- Light source: LED MCOB, 4 W (+-5%), 120 mA, 400 lm, 2700 K, RA 90+
- Voltage: Vtyp 30-42V DC, I_{max} 150 mA
- Class: II.

Choose an installation method

After unpacking, first check that there was no damage during transport and that the lighting fixture is complete. If not, contact your dealer immediately, as a later claim will not be recognized.

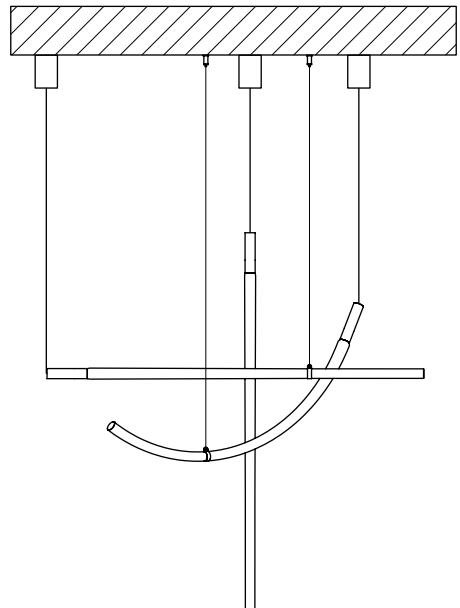
Assemble the lighting fixture according to the instructions on condition that the electrical installation is carried out by a qualified and authorized electrician in compliance with generally binding regulations.

When anchoring the lighting fixture to the ceiling, fix it correspondingly to safety and local standards with respect to the weight of the light fixture and the material of the ceiling (threaded rods, wall plugs and screws, others - not included in the package).

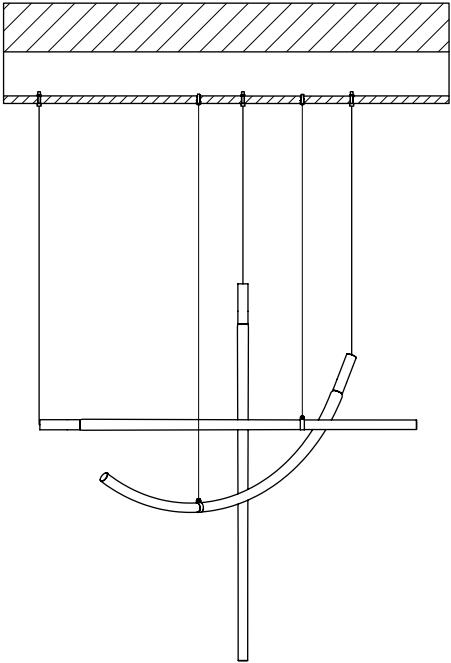
Bomma bears no responsibility for the chosen solution or its implementation.

A - SINGLE CANOPY

page 6-9

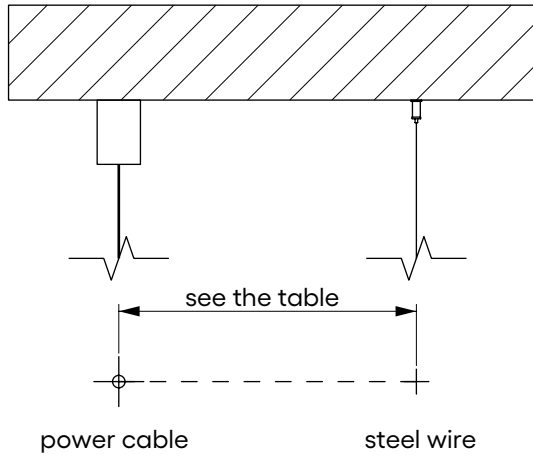


B - GROMMETS
false ceiling
page 10-13



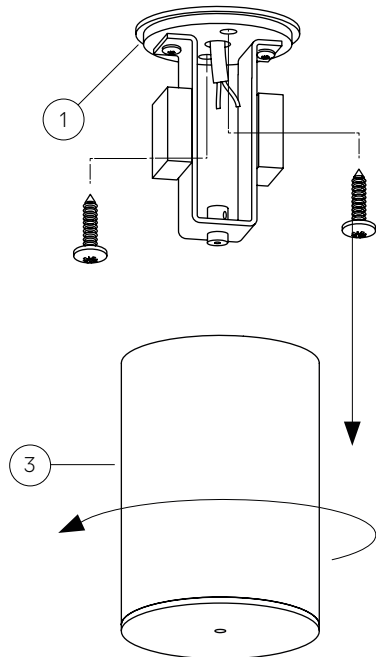
A - INSTALLATION OF A SINGLE CANOPY

Mark the anchor points on the ceiling. Scan the QR code on page 19-23 and see the table of cable lengths and the RCP plan 1:1.



1A

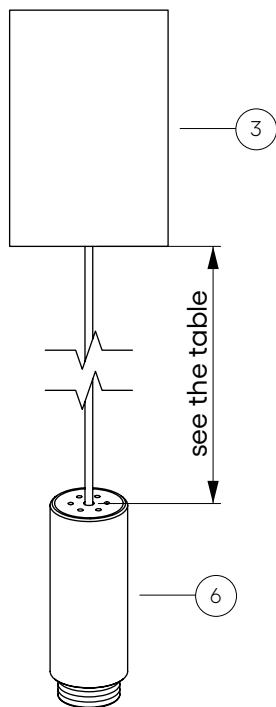
Unscrew the canopy ③ from the anchor plate ①. Slip the plate ① on the incoming power supply cable from the ceiling and attach using appropriate screws and wall plugs, which are not included in the package. Select their size and type according to the material of your wall or ceiling and the weight of the fixture.



2A

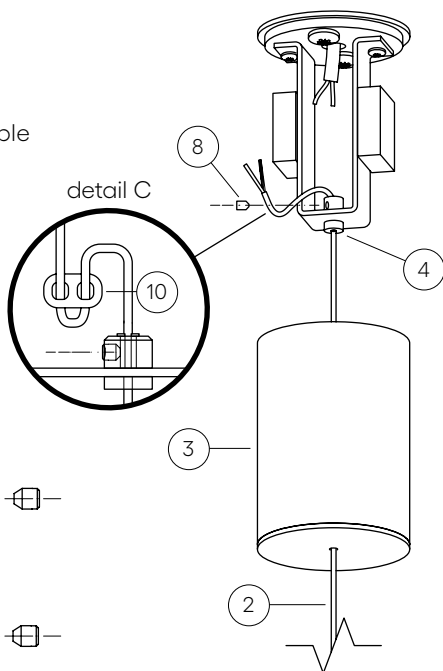
Measure and mark the length of the power cable from the mounting ⑥ to canopy ③. Scan the QR code on page 19-23 and see the table of cable lengths.

If you need to shorten the power cable, see page 18

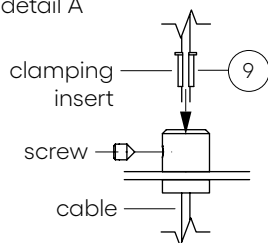


3A

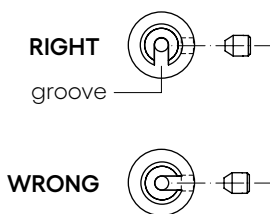
Slip the cable ② through the canopy ③ and then through the grommet ④. Fix the clamp on the cable just above the grommet ⑨ (detail A) and insert it into this grommet. Screw in the screw ⑧ so that it does not point into the groove in the clamping insert (detail B). Tighten the screw gently so that there was no damage to the cable. Thread the plastic lock ⑩ (detail C) on the cable. Finally, gently pull the cable to secure that it is properly fixed in the grommet.



detail A

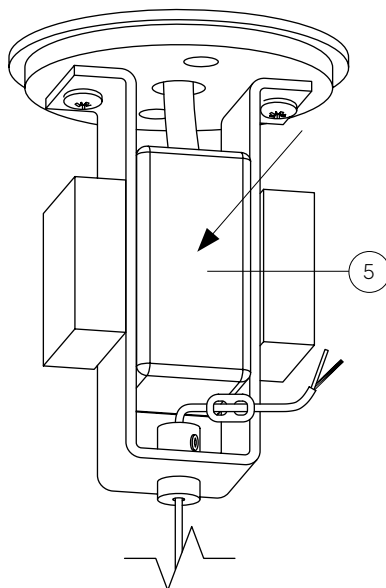


detail B



4A

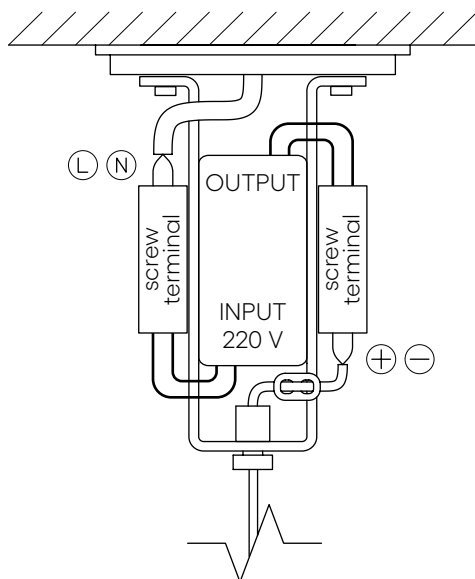
Insert the transformer ⑤ inside the metal “U” as shown.



5A

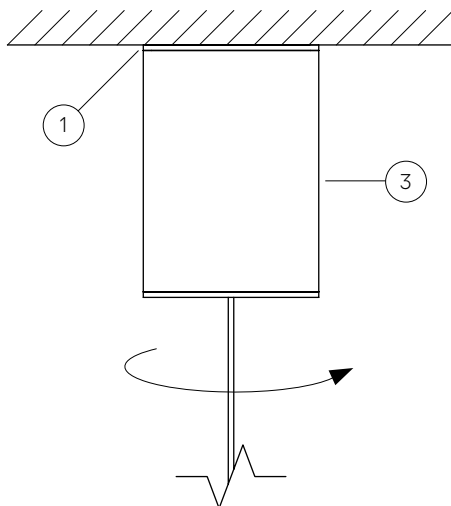
Install wiring according to the diagram.
Use a current power supply with output
values 120-150mA, 30-40V DC.

When installing the transformer, follow
the installation manual for the transformer,
which is included in this packaging.



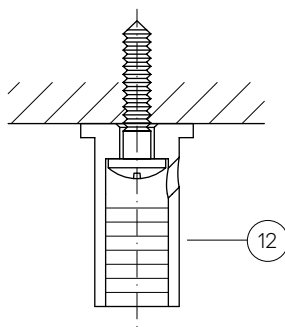
6A

Move the canopy ③ to the ceiling and screw it onto the anchor plate ①.

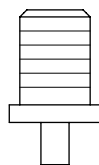


7A

Screw the reutlinger holder ⑫ to the ceiling.

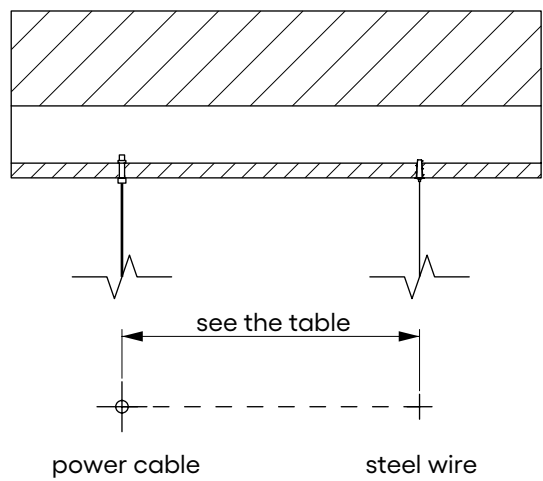


**CONTINUE WITH THE MANUAL
BY STEP 10 ON PAGE 14**



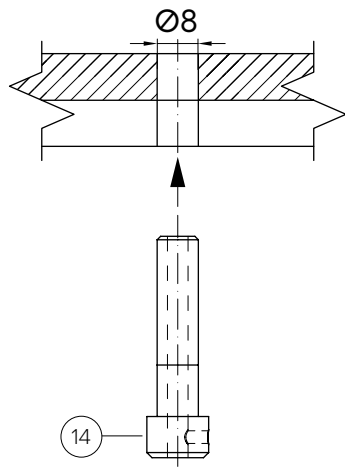
B - INSTALLATION WITH GROMMETS INTO FALSE CEILING

Mark the anchor points on the ceiling. Scan the QR code on page 19-23 and see the table of cable lengths and the RCP plan 1:1.



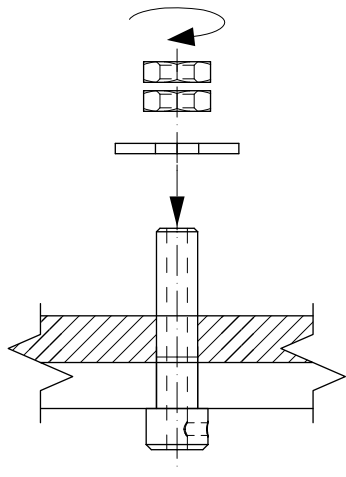
1B

Drill a Ø8mm hole through the point where you want to hang the luminaire and insert a grommet 14 into it.



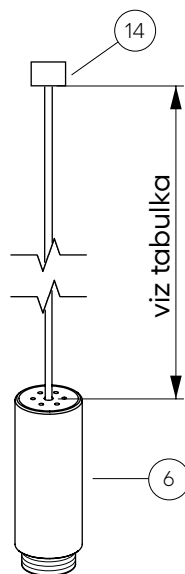
2B

From the top of the false ceiling or an anchor plate, place a washer on the grommet and screw the nuts.



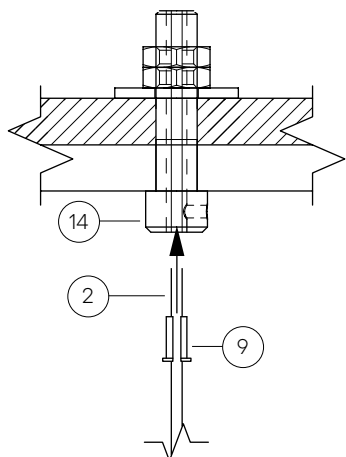
3B

Measure and mark the length of the power cable from the mounting ⑥ to the grommet ⑭.
Scan the QR code on page 19-23 to see the table of cable lengths.

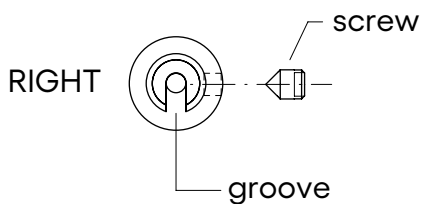


4B

Thread the end of the cable ② from the luminaire through the grommet ⑭. Just below the grommet, put the clamping insert ⑨ on the cable as shown in the picture and insert it into the grommet. Turn the clamping insert on the cable so that the screw on the side of the grommet does not point into the groove (DETAIL).

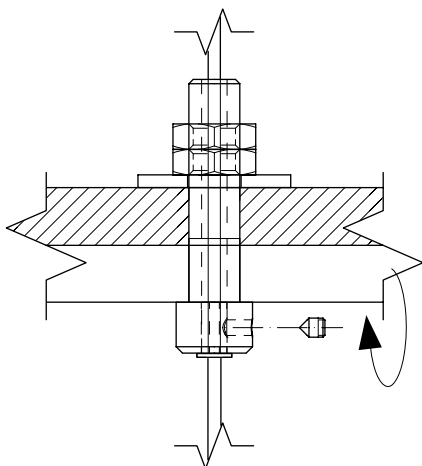


DETAIL

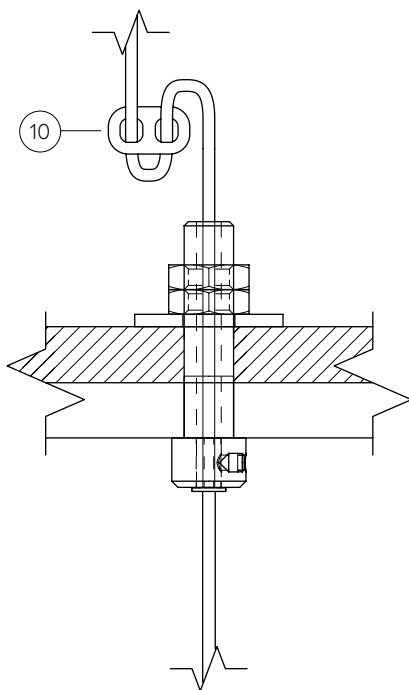


5B

Screw the screw into the grommet. Make sure that you tighten the screw sufficiently and that the cable does not slide down by gently pulling on the cable.

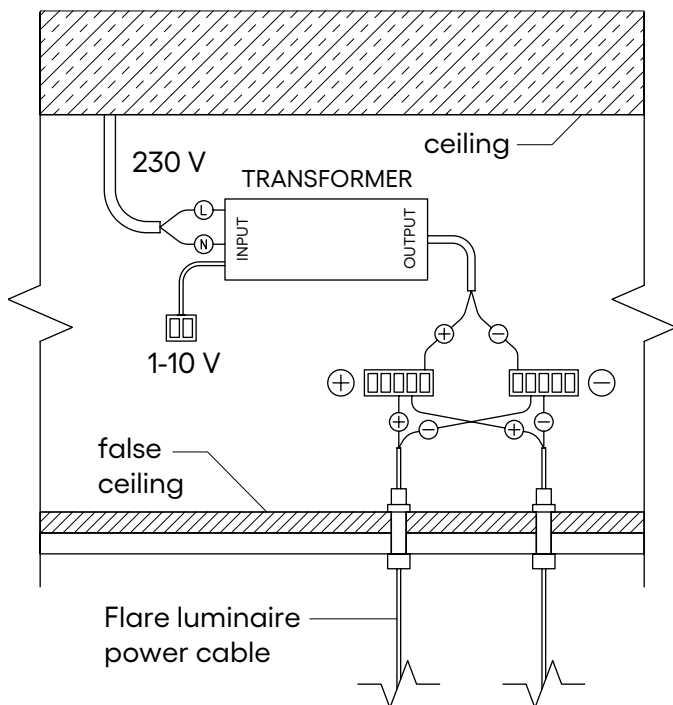
**6B**

Thread the plastic lock ⑩ onto the end of the cable above the grommet as shown.

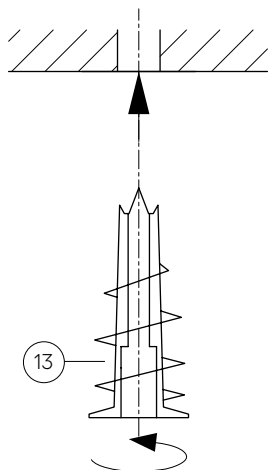


7B

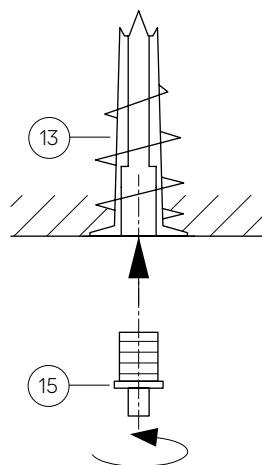
Do the wiring according to the diagram.

**8B**

In the place where the steel cable will pass, drill a hole min. $\varnothing 6\text{mm}$ through the false ceiling and screw a dowel (13) into it.

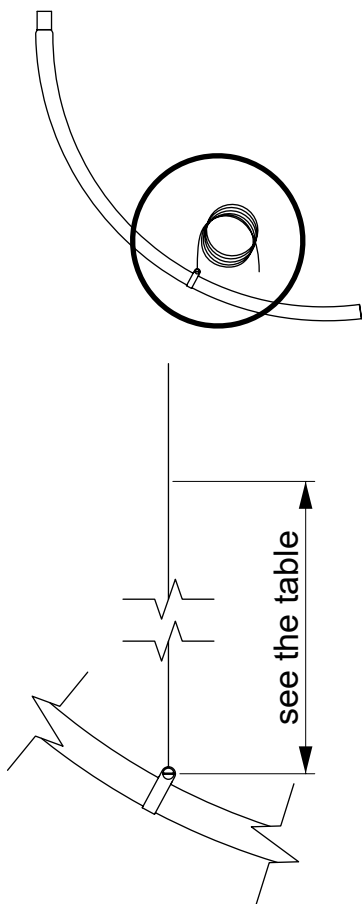
**9B**

Screw the reutlinger (15) into the dowel (13).



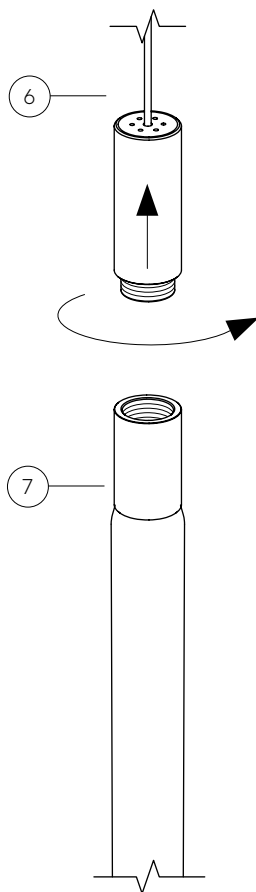
10

Measure the corresponding length of the steel wire and mark it. Scan the QR code on page 19-23 to see the table of cable lengths and RCP plan for your selected option.



11

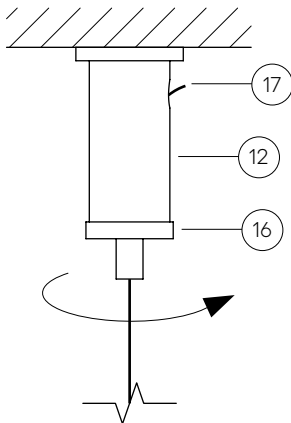
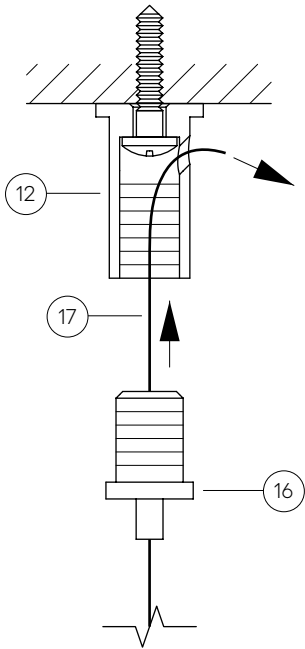
Screw the glass part ⑦ onto the mounting ⑥. Rotate only the glass part, not the mounting, to avoid twisting off the cable.



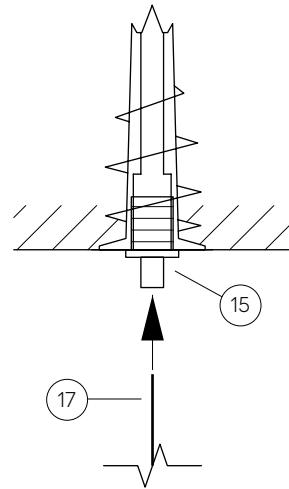
Insert the steel cable (17) into the reutlinger (16) and pull it through the reutlinger up to the mark, which you made on the cable in step 10. Thread the end of the cable through the reutlinger holder (12) according to the picture. The cable shall come out through the side hole. Reutlinger (16) screw into reutlinger holder (12). Trim the protruding end of the steel cable (17).

If you are installing in a false ceiling, just slide the steel cable (17) into the reutlinger (15).

OPTION - FIXED CEILING



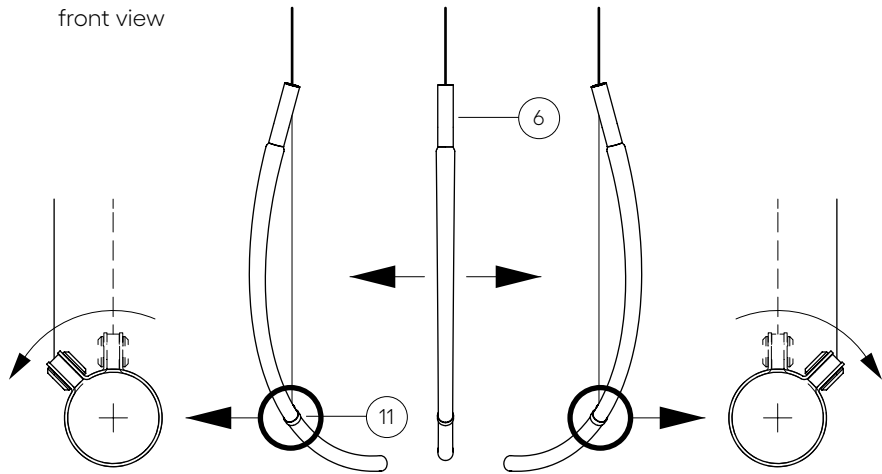
OPTION - FALSE CEILING



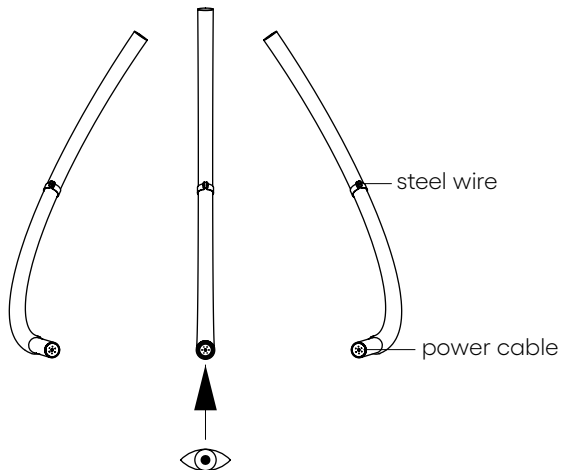
Curved bars B and C have variable suspension options. By turning ring ⑪ you can rotate the rod in space in different ways.

The turning principle is shown in the picture below. We look straight at the suspended rod so that the power and the steel cable are aligned behind each other and mounting ⑥ is closer to us.

Scan the QR code on page 19-23 to see the rotation of the rods of your chosen option.



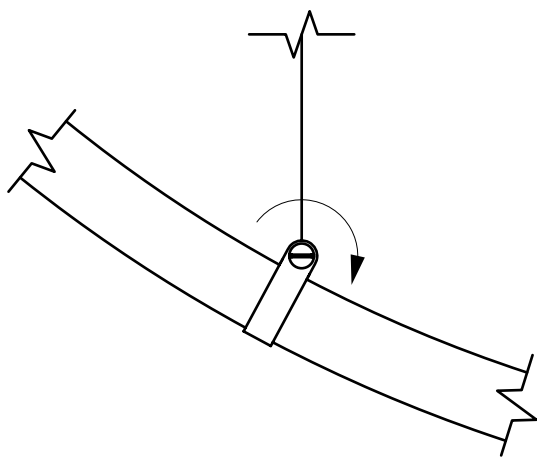
floor plan



Tighten the screw on the ring ⑪.

Congratulations! You may now reconnect the power and turn the light on.

When dismantling, first turn off the light and disconnect from the power supply. Then follow the above steps in reverse order. Use the original or similar packaging for possible later transport of the light fixture to prevent damage.



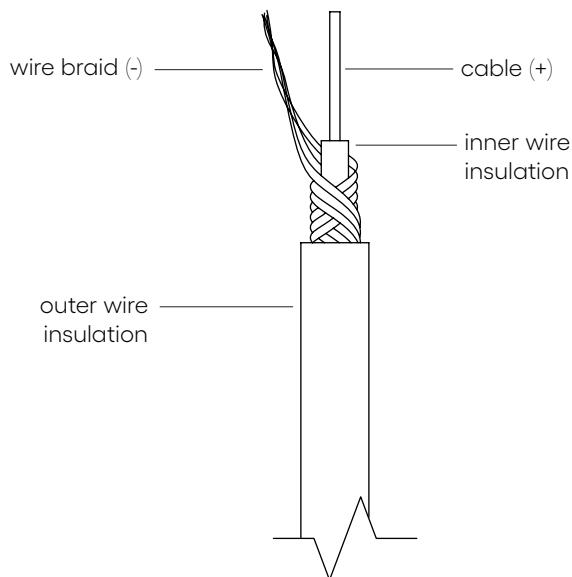
HOW TO SHORTEN THE POWER CABLE

Shorten the cable to the required length of the lamp suspension.

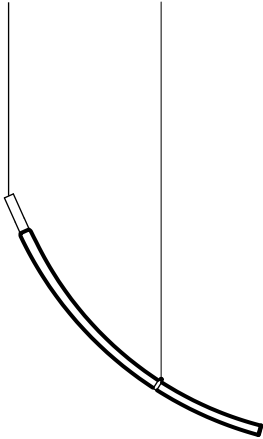
The shortening of the cable and insulating its end is to be done according to the picture.

Cable (+) and wire braid (-) will serve as cores for electrical installation.

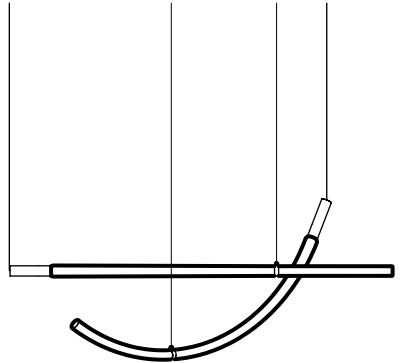
Video manual



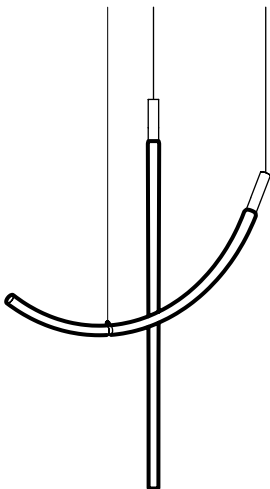
single rod



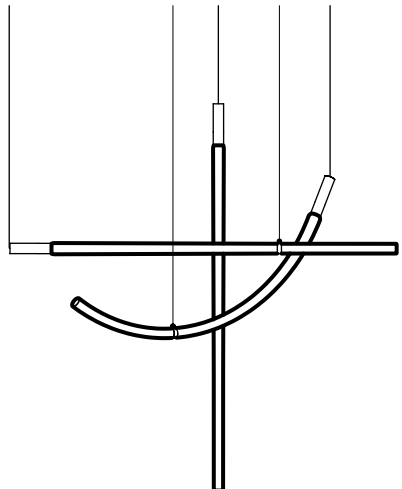
option 01



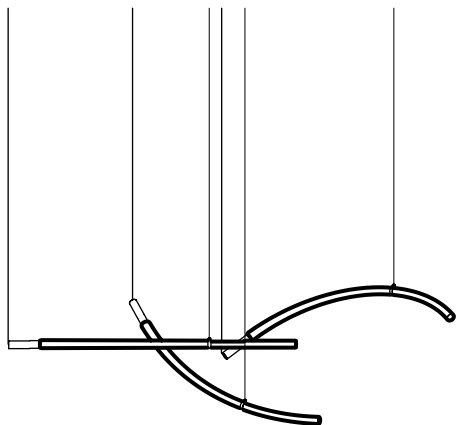
option 02



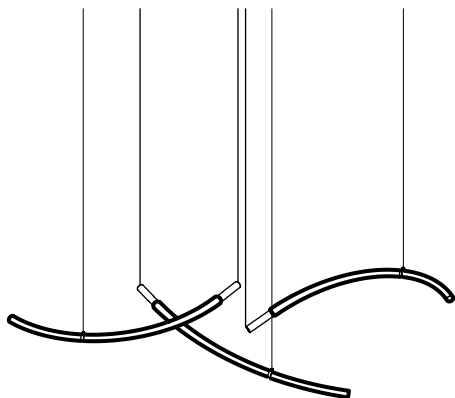
option 03



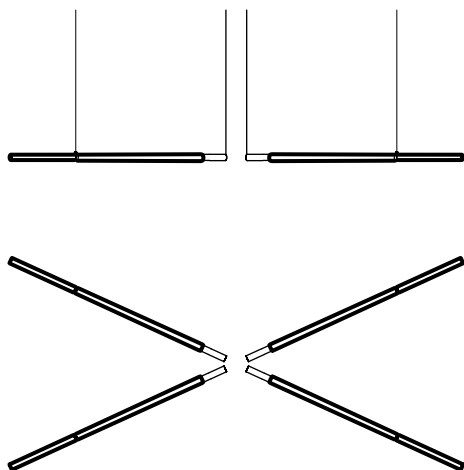
option 04



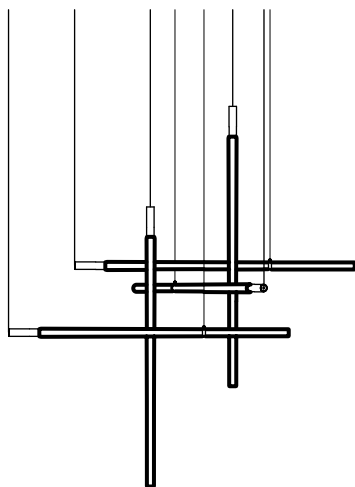
option 05



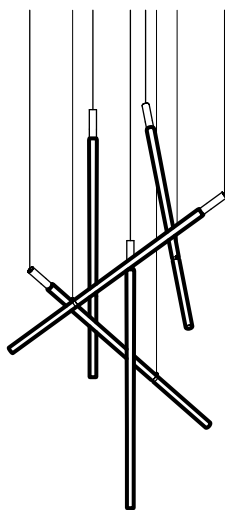
option 06



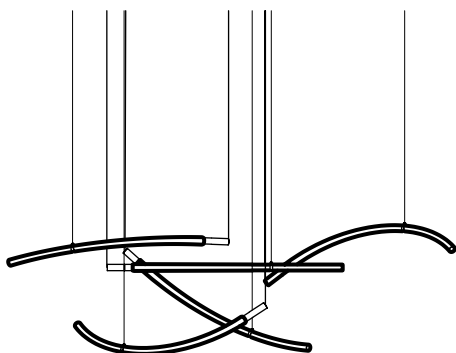
option 07



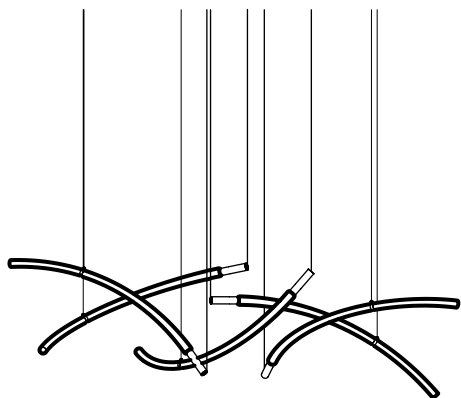
option 08



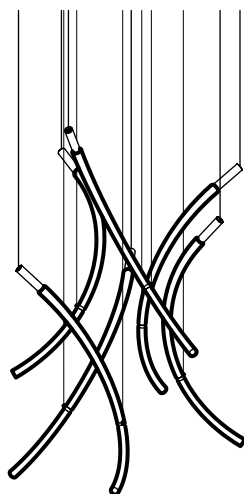
option 09



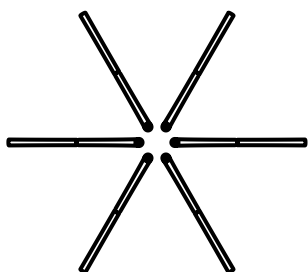
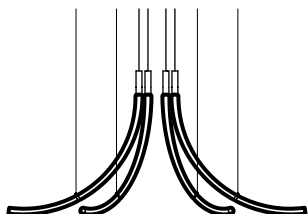
option 10



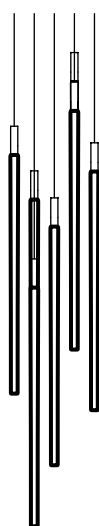
option 11



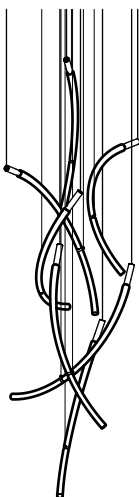
option 12



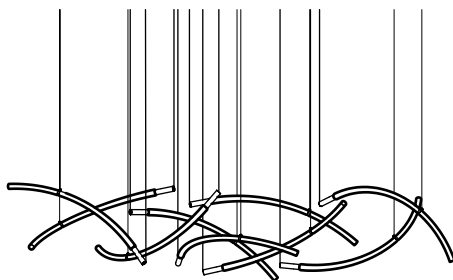
option 13



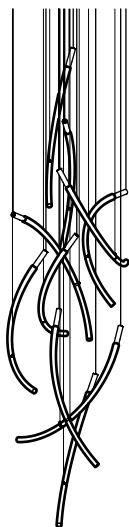
option 14



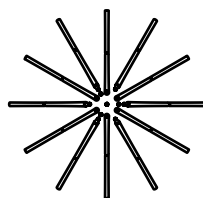
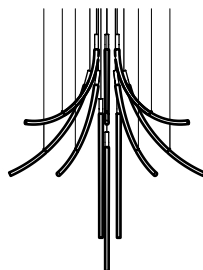
option 15



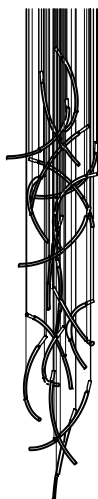
option 16



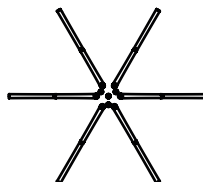
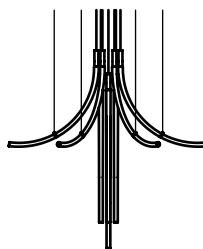
option 17



option 18



option 19



Maintenance

- When unpacking, assembling and cleaning the product, handle the individual parts with extra care, especially the glass parts which are very fragile.
- The assembly and wiring of the luminaire must be carried out by an authorized person.
- The pendant luminaire is intended for indoor use.
- We recommend consulting the suitability of the location and fixing of pendant luminaires to the ceiling material with a project manager, an engineer or other competent person.
- Do not cover the light source or touch the light source when the light is on.
- Do not make any repairs or changes to the components. Contact a specialist service center.
- Do not use any spare parts which have not been supplied or approved by the manufacturer (except for light sources).
- Do not expose the luminaire to an unsuitable environment where it might get damaged (water, heat, frost).
- Before servicing or cleaning pendant luminaires ensure sufficient access (ladder, scaffolding, mounting platform,...) so that you can reach and safely manipulate with the luminaire.
- **Warning:** the luminaire may in some parts have sharp edges which may cause injury. Take extra care when moving in close proximity to them.
- Any cleaning and maintenance should be carried out with the luminaire switched off and preferably disconnected (please mind this warning throughout the installation.)
- When changing a bulb, always disconnect the luminaire from the power supply.
- It is recommended to hang the luminaire at a sufficient height to avoid injury (such as head injury) to persons moving near the luminaire.
- It is recommended to install pendant luminaires in more than one person.
- After installing the luminaire, check that it is correctly and securely fixed to its base.
- Do not expose the luminaire to unreasonable loads, protect the luminaire from mechanical damage.
- The light source heats up during operation. Before starting any operation, wait until the light source cools down spontaneously _do not expose to rapid cooling_.
- Halogen light sources must not come into contact with oily materials, so do not touch them with bare hands. Install them using clean textile gloves or a clean cloth. To clean a halogen bulb, it is best to use alcohol-based products.
- When replacing the bulb, use the same or recommended light source (information about the type is on the label or in the installation instructions).
- Do not hang any other components on the luminaire in conflict with the manufacturer's installation instructions.
- Pay attention to checking all parts before their installation. Damaged components and glass parts _fragmentation, cracks_ can cause bodily injury to persons in their vicinity.
- Contact the manufacturer if a serious problem occurs during cleaning or maintenance of the luminaire.
- Any other manipulation with the luminaire should be carried out by qualified personnel or directly by the manufacturer.

Cleaning

- Any cleaning and maintenance should be carried out with the luminaire switched off and preferably disconnected.
- When cleaning, wear white gloves made of soft cotton cloth. In particular, do not touch the plated crystal without gloves. This will prevent the formation of impressions, loss of luster and color.
- Use a soft duster to clean the metal parts. Metal parts can be cleaned with dry or dampened duster in lukewarm demineralized water. When cleaning the parts, do not under any circumstances use solvents, technical gasoline, technical cleaners, peroxides or alkalis. Avoid alcoholic agents, which could cause the change of surface color.
- Clean the bulb with a soft damp cotton cloth, an anti-static soft-bristled brush or a vacuum cleaner on the low setting.
- Clean the stainless steel surfaces with special products, sold for this purpose.
- To clean the glass parts, use a mild cotton cloth, dry or moistened in lukewarm demineralized water, or a duster. Immediately after cleaning, dry the product completely so that no drops of water remain on the product, and carefully hang it back up.
- Take extra care when cleaning the individual parts of the luminaire that cannot be disconnected. Excessive handling might result in loosening or chipping.
- Do not use a dishwasher to wash any removable parts of the luminaire.

Important notice

- The manufacturer accepts no liability for damage resulting from improper installation, improper handling of the luminaire, including installation combined with accessories other than those recommended by the manufacturer.
- The manufacturer accepts no liability for damage resulting from unprofessional tampering with the fixings and safety features of the luminaire or for damage to the product caused by improper power supply voltage, storage or use of the luminaire in damp environment.
- Do not store the pendant luminaire in a damp environment, near a boiler, trap or other sources of steam. Do not place the luminaire over a bathtub in bathrooms and do not touch the luminaire if you are in contact with water.
- The manufacturer reserves the right to make minor variations in the design of the luminaire without prior notice.

Disposal

Upon the expiration of the product's shelf life, proceed in accordance to legal regulations for environmental protection and public health safety.

Waste Materials Catalog

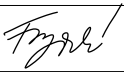
Number	Category	Name
10 11 11*	N	Waste glass
		in small particles
		and glass powder
		containing heavy metals
10 11 12	O	Waste glass other than those
		mentioned in 10 11 11
17 04 01	O	Copper, bronze, brass
17 04 05	O	Iron and steel
20 01 01	O	Paper and cardboard
15 01 05	O	Composite packaging

Contact

BMRC GROUP s.r.o.
Pod dráhou 1638/7, Holešovice,
170 00 Praha 7
Czech Republic
+420 569 453 149
info@bomma.cz
www.bomma.cz

Instagram bomma_cz
Facebook bommacz

bomma.cz

drawn by	approved by	revision	date	signature
Karel Jankovský	Jana Fryšavská	1	11. 2023	

Control

Date of packaging

[illegible]

step beyond